



CRYSTAL TOUCH CT9 Pro

New Generation 3.5" Touch Screen 4G & Ethernet
Cloud HTTP IoT & Access Control Terminal



RFID CARD



NFC/BLE



QR CODE



PINCODE



QR Code & Barcode



NFC tag & mobile phone



BLE mobile credential



RFID smart card

► CRYSTAL TOUCH CT9 PRO

CT9 Pro is Linux based HTTP/HTTPS server centralized terminal with wireless 4G and TCP/IP Ethernet suitable for both LAN and Internet cloud server software communication. It supports both of online server real-time monitor HOST Mode and standalone access control Local Mode, suite almost all kinds of applications and environments installations.

CT9 Pro incorporates with 5-in-1 multiple access credential technologies, touch keypad, RFID dual 125KHz & 13.56MHz smart cards, BLE & NFC mobile access, QR CODE/barcode by using mobile phone for visitor access control management. This combination makes the product flexible for all kinds of security applications and future technology requirements applicable for the security industry.

CT9 Pro gives easy access for user to customize UI and TEXT displayed on 3.5" touch screen through config software tool or remote server, with embedded relay control and rich commands to build versatile IoT and security applications.



4G & TCP/IP Cloud-based Security & IoT Terminal

► ADVANTAGES



Touchless access control terminal by using smart phone as credential via NFC & BLE technologies



Support QR code/Barcode for temporary visitor access control management



Support RFID LF(125KHz) & HF(13.56MHz) Mifare/Mifare Plus/DESFire various cards and EAL5+ encryption keys



Wireless 4G enables various usage occasions with less network on site



Ethernet TCP/IP (PoE) with HTTP/HTTPS command for online server real-time monitor



With RS485/wiegand to work with Cidron family slave readers for best performance and to achieve an encrypted secured level of smart card technologies



Embedded Linux OS with customize-able UI and expanded software functions for various applications



3.5" touch screen with programmable UI and TEXT display to build customer's innovative solutions

▶ CT9 PRO VERSATILE APPLICATIONS

Wire & wireless cloud based CT9 Pro with SDK is flexible to be customized to build various kinds of security & IoT applications.



ACCESS CONTROL

- Physical Access Control
- Visitor Access Management
- Function Room Reservation
- Condominiums Door Control



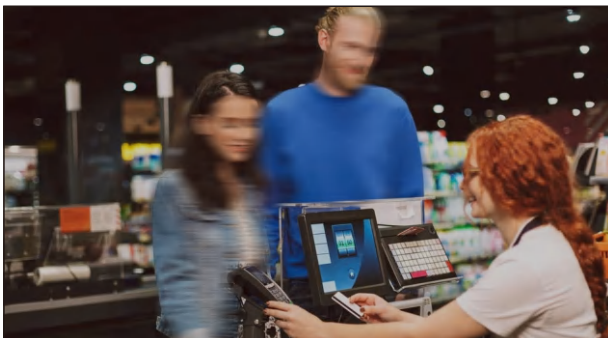
TIME ATTENDANCE

- HR Time Attendance
- Labor Attendance Management
- Mobile Staff Working Track
- Cloud real-time Attendance



CAR PARKING CONTROL

- Vehicle Entry Control
- NFC/BLE Mobile Entering
- Turnstile & Barrier Control
- Parking Payment



PAYMENT

- NFC Mobile Phone Payment
- QR Code Payment
- RFID Payment
- Dynamic QR Code display
- Membership Management



GYM & LOYALTY

- Membership Management
- Booking System
- Luxury & course management
- Golf courses & Tennis Court



IOT & FACILITY CONTROL

- Court barrier & Light Control
- Water Meter Remote Control
- Factory Equipment Control

► SPECIFICATION

CRYSTAL TOUCH PRO	CT9 Pro
Display	3.5" touch screen
Operating system	Linux
RFID ISO-protocol	125KHz, 13.56MHz ISO14443A/B, ISO18092 NFC
Contactless cards	125KHz Prox, 125KHz EM; 13.56MHz Mifare® Classic, Ultralight®, Mifare® Plus, DESFire® EV1/EV2, NFC tags
Secure Access Module	ISO7816 (T=0,T=1) 1 SAM module, SAM AV2
Mobile Credential	NFC, BLE
Barcode / QR scanner	- Decode range: 20mm-150mm(QR 20MIL) - Roll/Pitch/Yaw: 360°, +55°, +55° - Multiple formats supported (1D & 2D Codes): QR Code, Micro QR code, PDF417, Code 128, Code 39 and most mainstream 1D and 2D barcodes.
Keypad	Touch screen keypad 12 keypad in 4 rows of 3 keys
Communication interfaces	4G, TCP/IP, RS485, Wiegand input
Access control mode	Mobile ID, QR Code, RFID Card, Pincode

► SDK

CT9 Pro SDK includes developer guidance, HTTP commands, PC Host Demo with libraries, smart phone Demo App and example codes to ease your software development. HTTP commands is available for developer to get communication between CT9 Pro and server software, workable for both LAN and internet server software integration.

Online Card Users/Event logs	Unlimited
Offline Card Users/Event logs	10,000 users / 50,000 logs (more on request)
Working Mode	Host Mode or Local Mode
APB access control	Yes, external wiegand reader
Indicator	Controllable buzzer and speaker, TP display
I/O port	3* inputs - door contact, door exit, Buzzer control 4* tamper alarm switch, output Buzzer control, Access Granted, Access Denied
Housing Dimensions	Basic Model: 24mm(D)*165mm(H)*84mm(W); QR/4G/PoE Model: 45mm(D)*200mm(H)*84mm(W)
Power supply	12-30V DC; PoE IEEE 802.3af
Installation	Wall mount with terminal block connector
Protection Class	IP65 waterproof, avoid exposure to strong UV rays
Operation Temperature	-20 ~ +60°C
Operation Humidity	0-90% relative humidity non-condensing

* The specifications are subject to change without notice.

► HTP

HTP is plug & play hardware testing package, it includes all necessary accessories and software tool to establish full testing environment to greatly ease your test, development and firmware/system upgrading.

► CONFIGURATION



CT9 PRO APB ACCESS CONTROL FUNCTION

CT9 PRO is with RS485 and wiegand to work with Civintec Cidron family access control slave readers for best performance and achieve an encrypted secure level of smart card, and QR code, NFC & BLE mobile credential technologies.

► CT9 PRO MODEL SELECTION GUIDANCE

Optional Modules	CT9-M-T	CT9-ME-T	CT9-T-Q	CT9-T-P	CT9-T-QP	CT9-H	CT9-H-Q	CT9-H-P	CT9-H-QP
									
RFID	13.56MHz	125KHz & 13.56MHz	125KHz & 13.56MHz	125KHz & 13.56MHz	125KHz & 13.56MHz	125KHz & 13.56MHz	125KHz & 13.56MHz	125KHz & 13.56MHz	125KHz & 13.56MHz
NFC/BLE	yes	yes	yes	yes	yes	yes	yes	yes	yes
QR CODE	—	—	yes	—	yes	—	yes	—	yes
POE	—	—	—	yes	yes	—	—	yes	yes
TCP/IP	yes	yes	yes	yes	yes	yes	yes	yes	yes
4G	—	—	—	—	—	yes	yes	yes	yes
RS485	yes	yes	yes	yes	yes	—	—	—	—